

# BehaviorTrack™

## Loronix Intelligent Software

### Intelligent Software

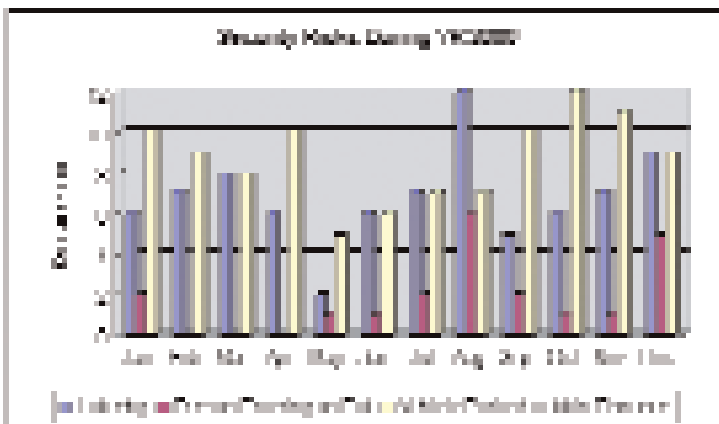
BehaviorTrack™ is a module within the ObjecTrack™ family of Loronix Intelligent software products. It works by detecting certain objects and their movements, and counts how many objects are present in a particular camera view (referred to as a Region of Interest). The purpose of BehaviorTrack is to allow customers to detect people and automobiles and their movements. BehaviorTrack can be used to improve video surveillance effectiveness and the operational performance of businesses such as retail chains, airports, high security government facilities, and others.

By providing real-time alert alarming, BehaviorTrack allows for the appropriate proactive action to be taken immediately. This proactive action may be related to addressing a security breach or a customer service need. BehaviorTrack also provides post-processing analysis of video streams detecting people and automobiles and their movements.

### Alerts

The following is an example list of user-defined real-time alerts that can be generated by a Loronix digital video solution with BehaviorTrack software. The Object will be identified in the message as either a person (people) or Motor Vehicle(s).

- Detect a person or motor vehicle entering the Region of Interest
- Detect a person or motor vehicle exceeding the user-specified quantity threshold in the Region of Interest
- Detect a person or motor vehicle moving in an unacceptable direction through the Region of Interest
- Detect a person or motor vehicle moving at an excessive speed through Region of Interest
- Detect a person or motor vehicle entering the Region of Interest and not moving



### Sample Report

Note: Reports can be created for a single location or multi location aggregation

- Detect a person or motor vehicle now moving after having been still for a user-specified amount of time
- Detect a person or motor vehicle exceeding the user-specified queue length quantity threshold in the Region of Interest
- Detect a person present in a Region of Interest while another person is absent in an adjacent Region of Interest (can be used to alert for customer service needed)

## Measurable Results

Statistical information gathered by the BehaviorTrack system may be used to generate reports concerning behaviors like:

- Number of potential security breaches/risks vs. time
- Number of incidences of loitering vs. time
- Number of backflow (moving in the wrong direction) violations vs. time
- Number of speed violations vs. time

These reports can help business and security managers optimize their operations; thereby lowering operational costs, liability risks, and security risks while improving customer service. BehaviorTrack will have a direct effect on a company's top and bottom line performance.

## ObjecTrack Software Family

BehaviorTrack is the first module of the ObjecTrack software family to be released by Loronix. Other modules in development include:

- **MovemenTrack™**: a sophisticated outdoor motion detection product that filters out unwanted motion due to weather while identifying motion of real interest
- Sophisticated Facial Recognition software that compares faces captured by the Loronix Digital Video System with a database of known faces

Visit us on the web at:  
[www.loronix.com](http://www.loronix.com)



For more information, email us at:  
[sales@loronix.com](mailto:sales@loronix.com)

### CORPORATE HEADQUARTERS

820 Airport Road  
 Durango, Colorado USA 81303  
 Voice (970) 259-6161  
 Fax (970) 385-4886

### INTERNATIONAL SALES & MARKETING HEADQUARTERS

1120 W. 122nd Ave., Ste. 200  
 Denver, CO USA 80234  
 Voice (303) 450-5900  
 Fax (303) 450-5952

### UNITED KINGDOM OFFICE

Unit 1B, Intec 2, Wade Road  
 Basingstoke, Hants UK RG24 8NE  
 Voice +44(0) 12563-56800  
 Fax +44(0) 12563-50711